
'CAPRI' TABLE LAMP BY ISABELLE SICART



£4,800

Code:5111

Black glazed sandstone earthenware

Contemporary French

Dimensions:

H 43.5cm x W 22cm

H 17" x W 8½"

'SANTORINI' LAMP BY ISABELLE SICART



£4,800

Code:6071

Cylindrical Uplighter Lamp Entitled "Santorin"

Mat white enamelled sandstone

Contemporary French

Dimensions:

H 30cm x Dia. 22cm

H 11.8" x Dia. 8.6"

FIVE ARM CEILING MOUNTED LIGHT



£5,940

Code:6171

RU EDITIONS

Seth Stein for Rose Uniacke
Designed 2012

Black painted steel with a very useful lateral spread with reduced height
so can be easily used with low ceilings

8 - 10 weeks

Dimensions:

H 58.5cm x W 109.5cm

H 23" x W 43"

PAIR OF BLACK SANDSTONE CERAMIC 'TRILOBE'
LAMPS BY ISABELLE SICART



£9,600

Code:5110

Black sandstone earthenware

Contemporary French

Lead time: 8 to 10 weeks

Dimensions:

H 43.5cm x W 23cm

H 17" x W 9"

PAIR OF LARGE CERAMIC UPLIGHTERS BY
ISABELLE SICART



£7,200

Code:5474

Plaster white earthenware, with flared top and turned waist decoration

Contemporary French

Can be sold individually

Dimensions:

H 37cm x Dia. 27cm

H 14½" x Dia. 10½"

PAIR OF MATCHED 'PEBBLE' LAMPS BY ISABELLE
SICART



£7,200

Code:5112

Pebble-polished earthenware with enamelled bronze glaze

Contemporary French

Dimensions:

H 21cm x Dia. 21cm

H 8½" x Dia. 8½"

STEEL 5-ARM CEILING MOUNTED LIGHT



£5,940

Code:2127

RU EDITIONS

Seth Stein for Rose Uniacke
Designed 2012

Black painted steel with a very useful lateral spread with reduced height
so can be easily used with low ceilings

8 - 10 weeks

Dimensions:

H 67.5cm x Dia. 140cm

H 26½" x Dia. 55"

STUPA HANGING LIGHT



£7,080

Code:3291

RU EDITIONS

Freshwest for Rose Uniacke

Lead time 10 -12 Weeks

Dimensions:

H 50cm x Dia. 72cm. 40kg

H 19¾" x Dia. 28½". 88.2lb

STUPA TABLE



£11,400

Code:1975

RU EDITIONS

Freshwest for Rose Uniacke

Limited Edition of 10

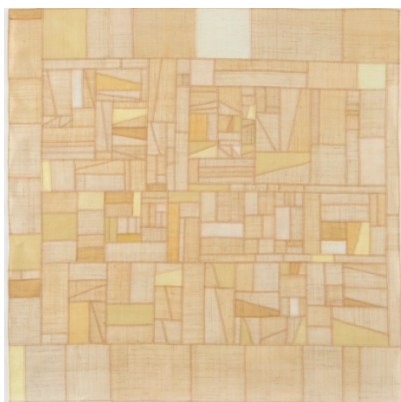
Lead time 10 -12 Weeks

Dimensions:

H 75cm x Dia. 113cm

H 29¾" x Dia. 44½"

SOSA EK OKSA JOGAKBO



£15,600

Code:5418

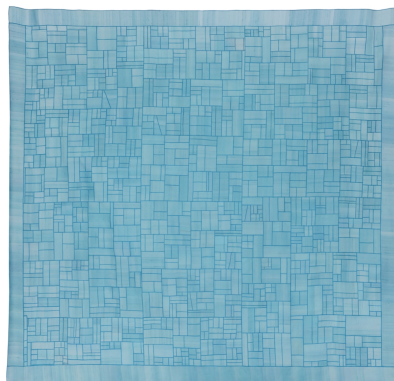
Fine silk, natural cold dyed cream, hand sewn by the artist. Rose Uniacke is excited to introduce the extraordinary work of renowned Korean textile artist Lee So-ra to a wider European audience at this year's PAD London 2018.

Dimensions:

H 157cm x W 154cm

H 62" x W 60¾"

OKSA JOGAKBO, LIGHT SEA BLUE



£33,600

Code:5417

Oksa fine silk, natural cold dyed indigo, hand sewn by the artist Rose Uniacke is excited to introduce the extraordinary work of renowned Korean textile artist Lee So-ra to a wider European audience at this year's PAD London 2018.

Dimensions:

H 200cm x W 198cm

H 79" x W 78"

8888 OKSA JOGAKBO



£78,000

Code:5419

Oksa fine silk, 8888 pieces natural dyed with Korean medicine herb, hand sewn by the artist. Rose Uniacke is excited to introduce the extraordinary work of renowned Korean textile artist Lee So-ra to a wider European audience at this year's PAD London 2018.

Dimensions:

H 215cm x W 215cm

H 84 $\frac{3}{4}$ " x W 84 $\frac{3}{4}$ "