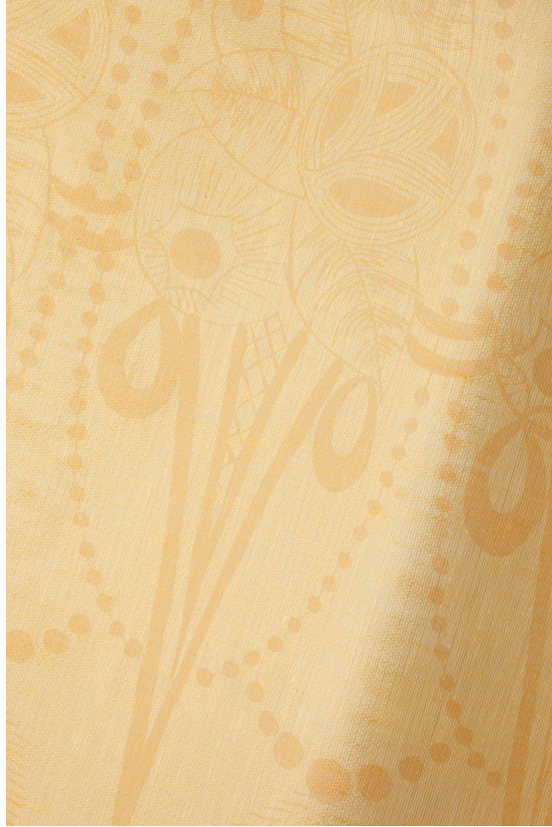


R

SHEER LINEN IN PINK ZELDA ON HONEY



£205

Code: 7081

Application: Curtains

Composition: 100% Linen

Horizontal repeat: 59.8cm | 23 ½" | Vertical repeat: Custom measured

Zelda is a reworked 1920's pattern. A sense of hand craftsmanship is expressed through both the design itself and the production of the print which is hand screen printed in London. Offered as a sheer option here which uses our Sheer Linen in Honey (100% linen) as a base. Zelda is printed to order, as the design is made up of 3 separate screens that enable the print placement to be custom measured to your drop requirements, so please get in touch with one of our sales associates.

Rose Uniacke

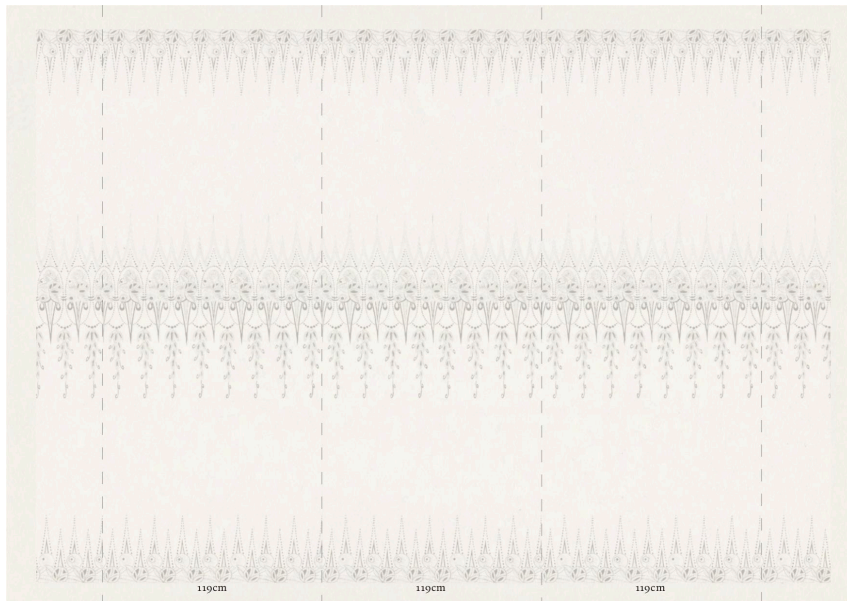
76-84 Pimlico Road, London SW1W 8PL T +44 (0)20 7730 7050
mail@roseuniacke.com www.roseuniacke.com

R

Dimensions:

W 119cm

W 46.87"



Rose Uniacke

76-84 Pimlico Road, London SW1W 8PL T +44 (0)20 7730 7050
mail@roseuniacke.com www.roseuniacke.com

R
