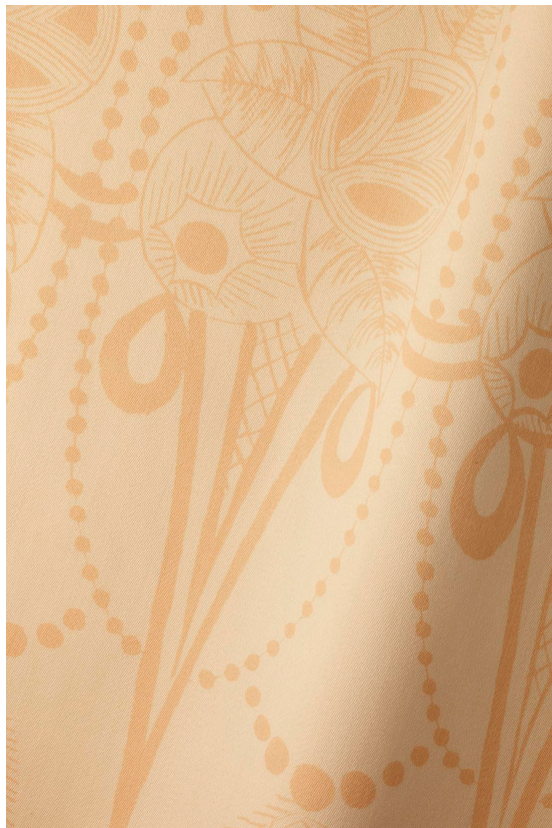


MID WEIGHT WOOL IN PINK ZELDA ON  
ALABASTER



£364

Code: 7087

Application: Upholstery, Curtains, Soft Furnishings

Composition: 100% Wool

Zelda is a reworked 1930's pattern. A sense of hand craftsmanship is expressed through both the design itself and the production of the print which is hand screen printed in England. Offered as an opaque option here which uses our Mid Weight Wool in Alabaster (100% Wool) as a base. Zelda is printed to order, as the design is made up of 3 separate screens that enable the print placement to be custom measured to your drop requirements, so please get in touch with one of our sales associates.

# R

Martindale: 40,000

BS 5852: Part 1: 1979 Ignition source o (Cigarette)

Horizontal repeat: 59.8cm | 23 ½" | Vertical repeat: Custom measured

Dimensions:

W 119cm

W 46.87"

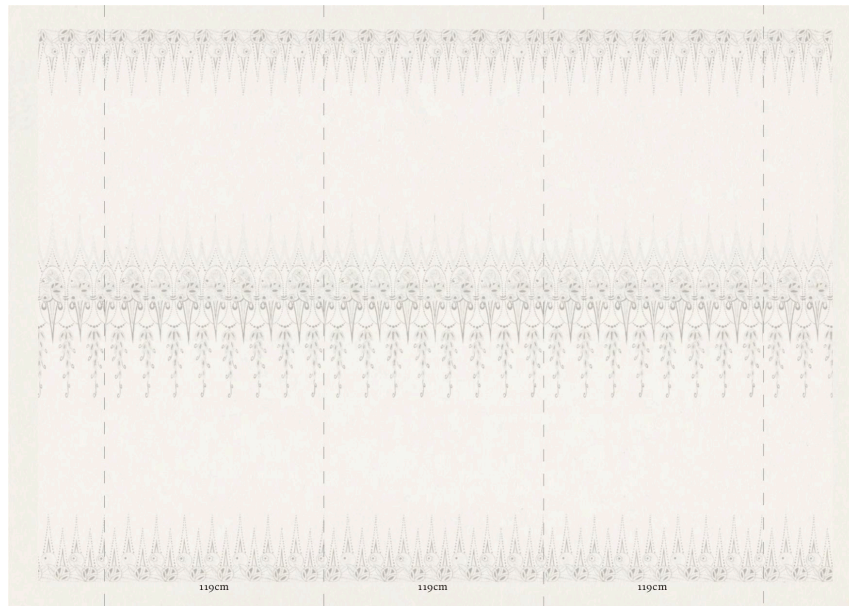


Rose Uniacke

76-84 Pimlico Road, London SW1W 8PL T +44 (0)20 7730 7050

mail@roseuniacke.com www.roseuniacke.com

# R



Rose Uniacke

76-84 Pimlico Road, London SW1W 8PL T +44 (0)20 7730 7050  
mail@roseuniacke.com www.roseuniacke.com